

**BFP shredder for front discharge lawnmowers  
ISEKI, JOHN DEERE, KUBOTA, SHIBAURA, GRILLO, TORO from 25/50  
HP with PTO 2000 / 2250 / 2500 / 3000 / 3000 rpm depending on the model.**



- Working width of 130 and 155 cm.
- 2-point front attachment.
- Delivered with high-speed cardan shaft drive (except TORO).
- Steel case with incorporated freewheel.
- 3-position displacement, **3 - 7 - 12 cm.**
- Y" flail knives, width 40 thickness 5.
- Working height adjustable from -1,5 to 11cm depending on type of knives used (Y, hammers, grass blades or scarifier).
- Puncture-proof front wheels Ø28 x 10 cm (11X4.00-5).

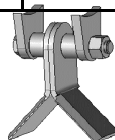
**The advantages :**

- Substantial fuel savings thanks to rotor design.**
- Oversized helical rotor:** *effortless, uniform drive and optimum shredding, thick rotor tube: increased rigidity and cutting inertia, electronic balancing after knife assembly. **Reduced energy consumption and CO2 emissions.***
- High rotor speed:** *from 2350 to 2650 rpm, providing a cutting speed of 40 to 45 m/s for perfect cutting and shredding.*
- Rotor supports equipped with European quality bearings with anti-clogging deflectors:** *deflectors and scrapers eliminate the risk of bearing winding up and clogging.*
- Curved and armored chassis:** *the shape of the chassis and the special arrangement of the rear roller optimize ventilation, ejection and self-cleaning of the roller. **Armored steel chassis 3 mm thick.***
- High entrance opening:** *allows to cut high vegetation, without laying it down.*
- Rear roller :** *Specially designed to resist lateral movements and protect the supports from winding and projections. Greaseable supports with double row angular contact bearings and labyrinth seals. Quick and easy adjustment by means of side levers.*
- Puncture-resistant front wheels:** *11 x 4.00 (Ø28 x 10cm) solid tire wheels.*
- Transmission:** *3 European quality V-belts, tension adjustment by tensioning roller without disassembly, lights on the belt housing for easy tension control.*
- Safety and ergonomics:** adjustable side deflectors, front flaps with high resistance anti-splash coating, lifting ring for handling. Bearing grease fittings and pivots accessible without disassembly.

References	Power cell	PTO Tractor rpm	Rotor rotation (RPM)	Cutting speed (m/s)	Number of tools			General dimensions L x W x H cm	Weight (kg)
					"Y"	Lawn trowels Hammers	Scarifying knives		
BFP130ISF235	ISEKI SF224-235	2000	2350	40	44	22	66	149 x 130 x 48	220
BFP155ISF235					52	26	78	174 x 130 x 48	235
BFP130ISF310	ISEKI SF303 - SF370				44	22	66	149 x 130 x 48	220
BFP155ISF310					52	26	78	174 x 130 x 48	235
BFP130ISF450	ISEKI SF438-450 SF544-551				44	22	66	149 x 130 x 48	220
BFP155ISF450					52	26	78	174 x 130 x 48	235
BFP130JD1580	JOHN DEERE 1445 à 1585	2250	2650	45	44	22	66	149 x 130 x 48	220
BFP155JD1580					52	26	78	174 x 130 x 48	235
BFP130KF3890	KUBOTA F2680 à 3990 F251-391	2500	2500	42	44	22	66	149 x 130 x 48	214
BFP155KF3890					52	26	78	174 x 130 x 48	230
BFP130SCM314	SHIBAURA CM314-CM374	2250	2650	45	44	22	66	149 x 130 x 48	220
BFP155SCM314					52	26	75	174 x 130 x 48	235
BFP130GFMFD	GRILLO FM1309 - FD2200	2000	2350	40	44	22	66	149 x 130 x 48	220
BFP155GFMFD					52	26	75	174 x 130 x 48	235
BFP130TGM3300 + MATGM3300	TORO GROUNDMASTER 3200 - 3300	3000	2500	42	44	22	66	149 x 130 x 48	220
BFP155TGM3300 + MATGM3300					52	26	75	174 x 130 x 48	235

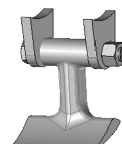
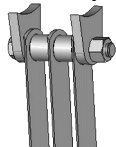
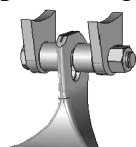
(MATGM3300 = Coupling handle required).

Equipped as standard with Y knives

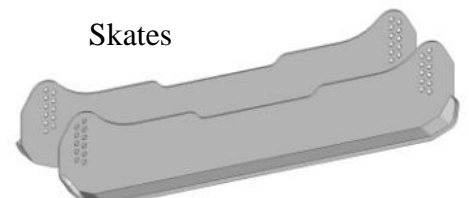


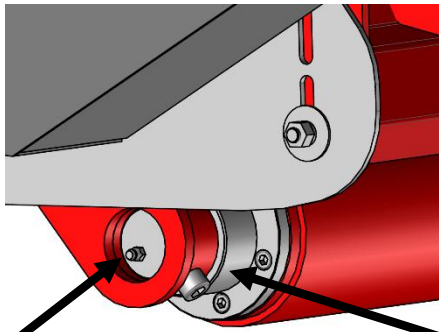
Options :

It can be equipped with grass knives, scarifying knives or hammers.

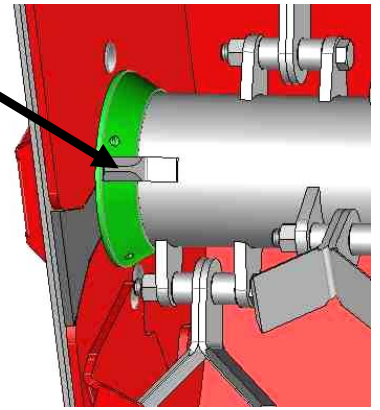


Skates





Scrapers mounted on the rotor to prevent grass winding up

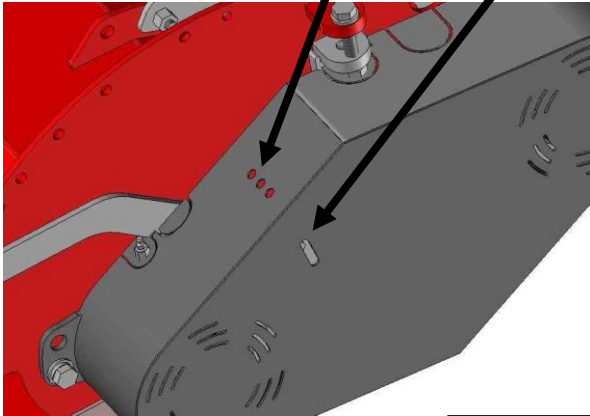


Greasable rear roller support

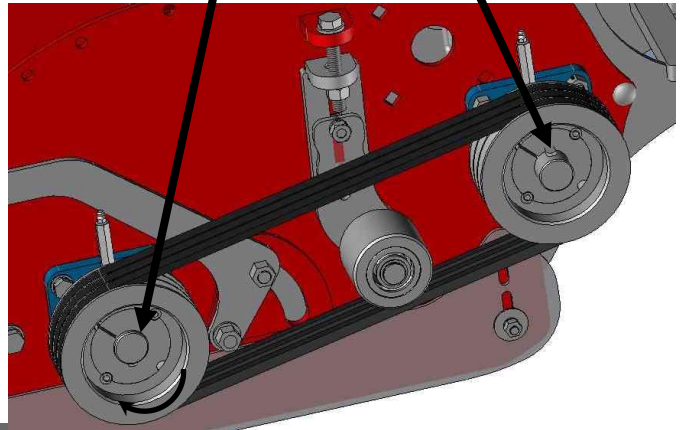
**Rear roller :** Double row angular contact ball bearings and labyrinth seals

Openings to press the straps with a screwdriver

Light to visualize tension



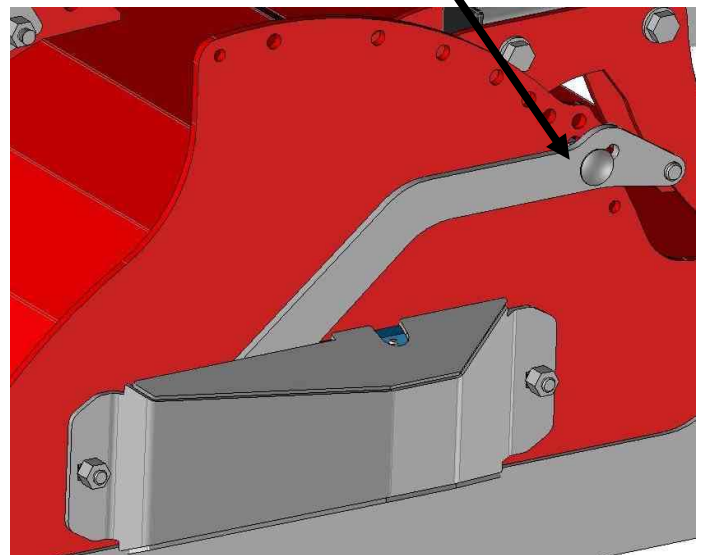
Pulley assembly with eccentric ring + keyway



Accessible roller tension



Rear roller adjustment by indexing lever



Accessible greasing of rotor bearings

